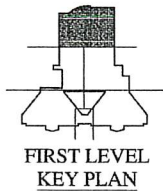
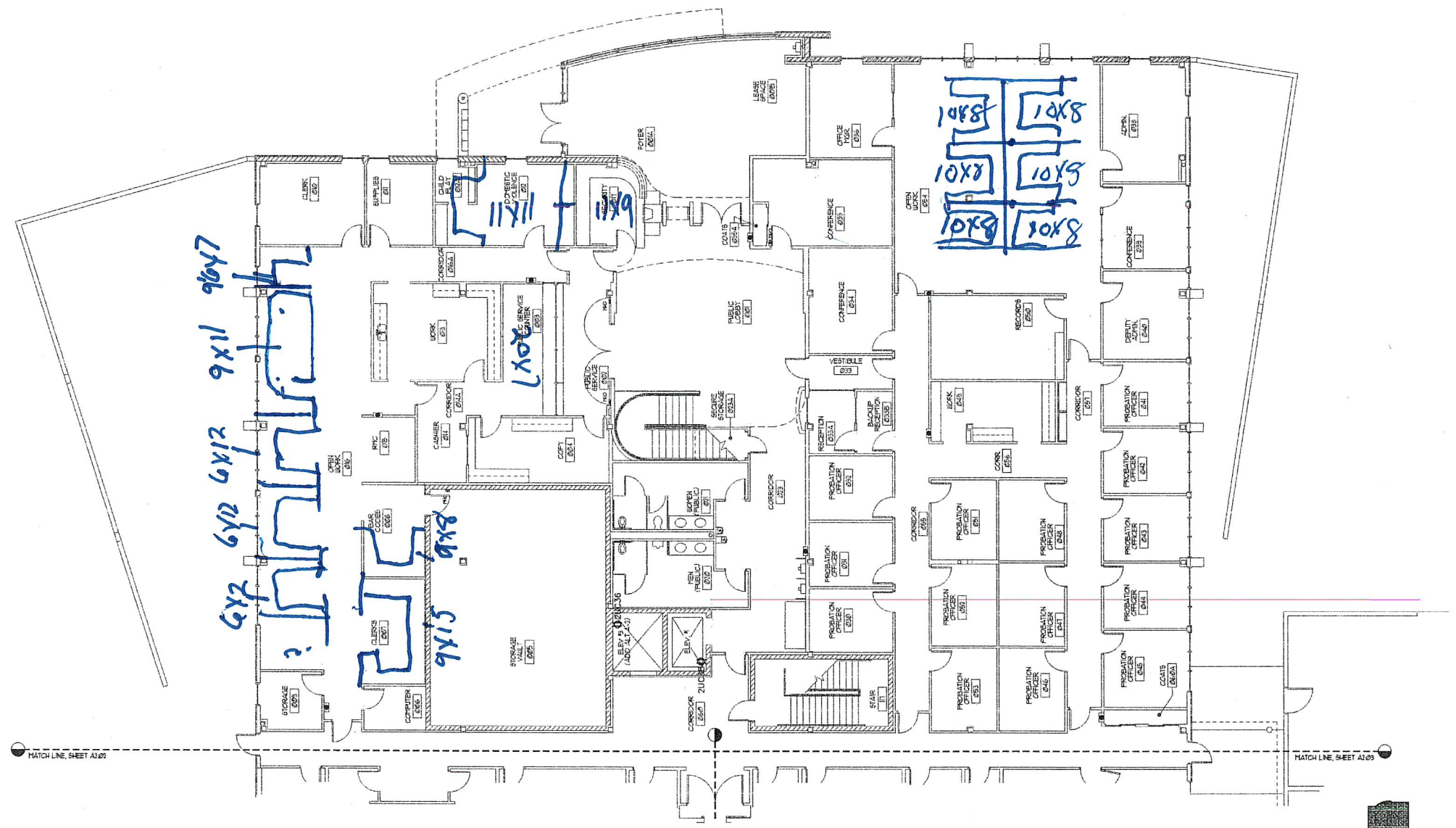


E:\ARCHITECT\COMMERCIAL\Thurston County\Juv Detention & Court\19911864.dwg Thu Dec 09 08:45:19 1999



JUVENILE DETENTION & COURT
EMERGENCY POWER AND LIGHTING PLAN - FIRST LEVEL

THURSTON COUNTY DEPARTMENT OF PUBLIC WORKS
 ENGINEERING DIVISION
 2000 LAKERIDGE DRIVE SW
 OLYMPIA, WA 98502 (360) 754-4657
 Deputy Director Design Engineer

Designed:	
Drafted:	E.A.B.
Checked:	
Scale:	1/8" = 1'-0"

Revisions	Date
AS-BUILT	10/31/96

THURSTON COUNTY
JUVENILE DETENTION & COURT
 C.R.P. No. _____ F.A. No. _____

EMERGENCY POWER & LIGHTING PLAN - FIRST LEVEL

Sheet
E4.0